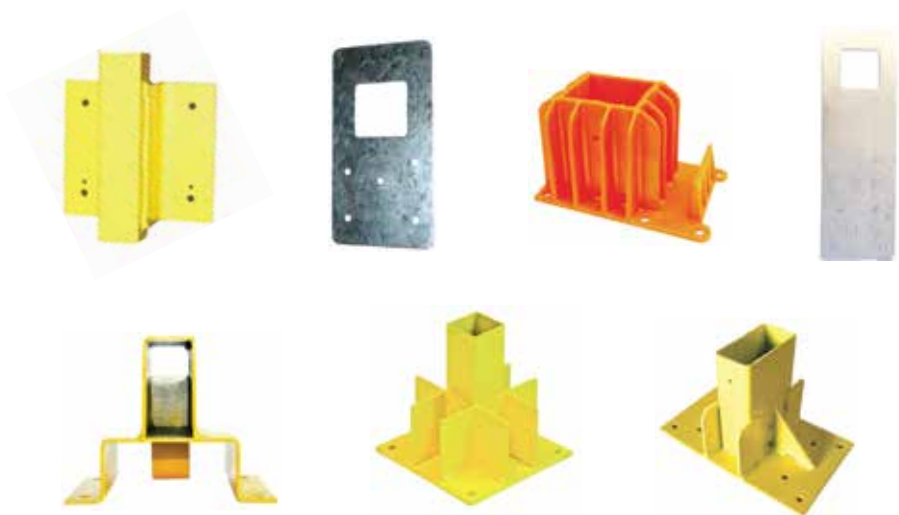


GUARDIAN

FALL PROTECTION



Product Name: Guardrail Receivers

Part #: 15158; 15159; 15188; 61027; 61029; 61140; 61141

Instruction Manual

Do not throw away these instructions!
Read and understand these instructions before using equipment!

Table of Contents

Introduction	1-2
Applicable Safety Standards	2
Worker Classifications	2
Safety Information	3-4
Maintenance, Cleaning, and Storage	5
Inspection	5
Product Specific Applications	6
Components and Specifications	6
Installation and Use	7-9
Inspection Log	10
Notes	10

Introduction

Thank you for purchasing a Guardian Fall Protection Guardrail Receivers. This manual must be read and understood in its entirety, and used as part of an employee training program as required by OSHA or any applicable state agency.

This and any other included instructions must be made available to the user of the equipment. The user must understand how to safely and effectively use the Guardrail Receivers, and all fall safety equipment used in combination with the Guardrail Receivers.

User Information	
Date of First Use:	_____
Serial #:	_____
Trainer:	_____
User:	_____

Applicable Safety Standards

When used according to instruction specifications, this product meets or exceeds all applicable OSHA 1926 Subpart M and OSHA 1910 standards for fall protection. Applicable standards and regulations depend on the type of work being done, and also might include state-specific regulations. Consult regulatory agencies for more information on personal fall arrest systems and associated components.

Worker Classifications



Understand the following definitions of those who work near or who may be exposed to fall hazards.

Qualified Person: A person with an accredited degree or certification, and with extensive experience or sufficient professional standing, who is considered proficient in planning and reviewing the conformity of fall protection and rescue systems.

Competent Person: A highly trained and experienced person who is ASSIGNED BY THE EMPLOYER to be responsible for all elements of a fall safety program, including, but not limited to, its regulation, management, and application. A person who is proficient in identifying existing and predictable fall hazards, and who has the authority to stop work in order to eliminate hazards.

Authorized Person: A person who is assigned by their employer to work around or be subject to potential or existing fall hazards.

It is the responsibility of a Qualified or Competent person to supervise the job site and ensure all applicable safety regulations are complied with.

Safety Information



Failure to understand and comply with safety regulations may result in serious injury or death. Regulations included herein are not all-inclusive, are for reference only, and are not intended to replace a Competent Person's judgment or knowledge of federal or state standards.

Do not alter equipment.

Do not misuse equipment.

Workplace conditions, including, but not limited to, flame, corrosive chemicals, electrical shock, sharp objects, machinery, abrasive substances, weather conditions, and uneven surfaces, must be assessed by a Competent Person before fall protection equipment is selected.

The analysis of the workplace must anticipate where workers will be performing their duties, the routes they will take to reach their work, and the potential and existing fall hazards they may be exposed to.

Fall protection equipment must be chosen by a Competent Person. Selections must account for all potential hazardous workplace conditions.

All fall protection equipment should be purchased new and in an unused condition.

Fall protection systems must be selected and installed under the supervision of a Competent Person, and used in a compliant manner.

Fall protection systems must be designed in a manner compliant with all federal, state, and safety regulations.

Unless explicitly stated otherwise, the maximum allowable free fall distance for lanyards must not exceed 6'. No free fall allowed for non-LE SRLs. Class A SRLs must arrest falls within 24"; Class B SRLs must arrest falls within 54".

Forces applied to anchors must be calculated by a Competent Person.

Harnesses and connectors selected must be compliant with manufacturer's instructions, and must be of compatible size and configuration.

A pre-planned rescue procedure in the case of a fall is required. The rescue plan must be project-specific. The rescue plan must allow for employees to rescue themselves, or provide an alternative means for their prompt rescue.

Store rescue equipment in an easily accessible and clearly marked area.

Training of Authorized Persons to correctly erect, disassemble, inspect, maintain, store, and use equipment must be provided by a Competent Person.

Training must include the ability to recognize fall hazards, minimize the likelihood of fall hazards, and the correct use of personal fall arrest systems.

NEVER use fall protection equipment of any kind to hang, lift, support, or hoist tools or equipment, unless explicitly certified for such use.

Maintenance of equipment must be done according to manufacturer's instructions. Equipment instructions must be retained for reference.

Prior to EACH use, all equipment in a fall protection system must be inspected for any potential or existing deficiencies that may result in its failure or reduced functionality. IMMEDIATELY remove equipment from service if any deficiencies are found.

Equipment must be inspected by a Competent Person at least every six months. These inspections must be documented in equipment instruction manual and on equipment inspection grid label.

Equipment must be inspected for defects, including, but not limited to, the absence of required labels or markings, improper form/fit/function, evidence of cracks, sharp edges, deformation, corrosion, excessive heating, alteration, excessive wear, fraying, knotting, abrasion, and absence of parts.

Equipment that fails inspection in any way must immediately be removed from use, or repaired by an entity approved by the manufacturer.

No on-site repair of equipment unless explicitly permitted by Guardian Fall Protection.

Equipment subjected to forces of fall arrest must immediately be removed from use.

Snap hooks, carabiners, and other connectors must be selected and applied in a compatible fashion. All risk of disengagement must be eliminated. All snap hooks and carabiners must be self-locking and self-closing, and must never be connected to each other.

Age, fitness, and health conditions can seriously affect the worker should a fall occur. Consult a doctor if there is any reason to doubt a user's ability to withstand and safely absorb fall arrest forces or perform set-up of equipment.

Pregnant women and minors must not use this equipment.

Physical harm may still occur even if fall safety equipment functions correctly. Sustained post-fall suspension may result in serious injury or death. Use trauma relief straps to reduce the effects of suspension trauma.

Allowable individual worker weight limit (including all equipment), unless explicitly stated otherwise, is 130-310 lbs.

Maintenance, Cleaning, and Storage

Repairs to Guardrail Receivers can only be made by a Guardian Fall Protection representative or an entity authorized by Guardian. Contact Guardian for all maintenance and repair needs at: 1-800-466-6385. If a Guardrail Receivers fails inspection in any way, immediately remove it from service, and contact Guardian to inquire about its return or repair.

Cleaning after use is important for maintaining the safety and longevity of Guardrail Receivers. Remove all dirt, corrosives, and contaminants from Guardrail Receivers before and after each use. If Guardrail Receivers cannot be cleaned with plain water, use mild soap and water, then rinse and wipe dry. NEVER clean Guardrail Receivers with corrosive substances.

When not in use, store equipment where it will not be affected by heat, light, excessive moisture, chemicals, or other degrading elements.

Inspection

KEEP INSTRUCTIONS AVAILABLE FOR REFERENCE. Record Date of First Use.

Prior to EACH use, inspect Guardrail Receivers for deficiencies, including, but not limited to, corrosion, deformation, pits, burrs, rough surfaces, sharp edges, cracking, rust, paint buildup, excessive heating, alteration, and missing or illegible labels. IMMEDIATELY remove Guardrail Receivers from service if defects or damage are found, or if exposed to forces of fall arrest.

Ensure that applicable work area is free of all damage, including, but not limited to, debris, rot, rust, decay, cracking, and hazardous materials. Ensure that selected work area will support the application-specific minimum loads set forth in this instruction manual. Work area MUST be stable.

At least every 6 months, a Competent Person other than the user must inspect Guardrail Receivers. **Competent Person inspections MUST be recorded in inspection log in instruction manual and on equipment inspection grid label. The Competent Person must sign their initials in the box corresponding to the month and year the inspection took place.**

During inspection, consider all applications and hazards Guardrail Receivers has been subjected to.

Product Specific Applications



WARNING Use of equipment in unintended applications may result in serious injury or death. NEVER make any connections to guardrail systems.



Guardrail Receivers may be used in Fall Prevention applications ONLY. Fall Prevention Systems are placed around the leading edges of any and all fall hazards to prevent a worker from going over an edge, and may be used in substitute of Fall Protection or safety netting systems. Installation requirements for Guardrail Receivers set forth in this manual MUST be adhered to. Personal Fall Arrest, Work Positioning, Climbing, Rescue, and any other systems must NEVER be connected to Fall Prevention Systems.



WARNING NEVER lean or climb on guardrail systems.

Surfaces more than 6' above lower levels require the use of a Fall Prevention or Fall Protection system.

Components and Specifications

Materials. Made from some or all of the following: powder-coated steel, galvanized steel, and high strength plastic.

Part #	Materials	Description
15158	Powder Coated Steel	Guardrail Receiver for use with Guardrail Posts
15159	Stainless Steel	Guardrail Standard Gusset Mount
15188	High Strength Plastic	Guardrail Angel Boot
61027	Stainless Steel	Extended Guardrail Gusset Mount
61029	Powder Coated Steel	Guardrail Receiver for use with 2" x 4" Boards
61140	Powder Coated Steel	Stair Mount for use with Guardrail Posts
61141	Powder Coated Steel	Stair Mount for use with 2" x 4" Boards



#15158



#15159



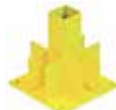
#15188



#61027



#61029



#61140



#61141

Installation and Use

Prior to use, plan the entire Fall Prevention system. All leading edges of fall hazards must be blocked, or a supplemental Fall Protection system **MUST** be used in combination with, but never connected to, the applicable Fall Prevention system.

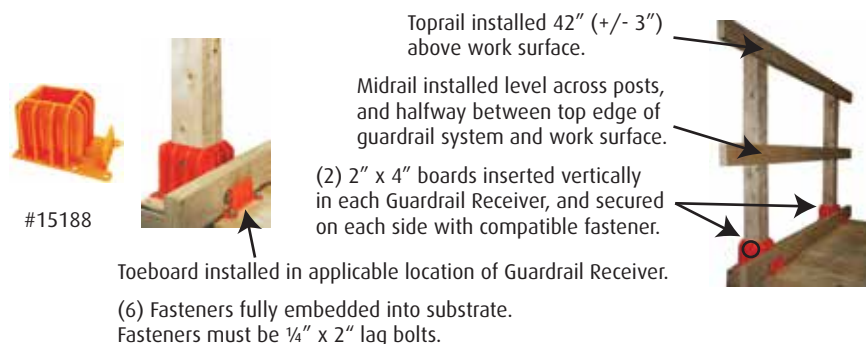
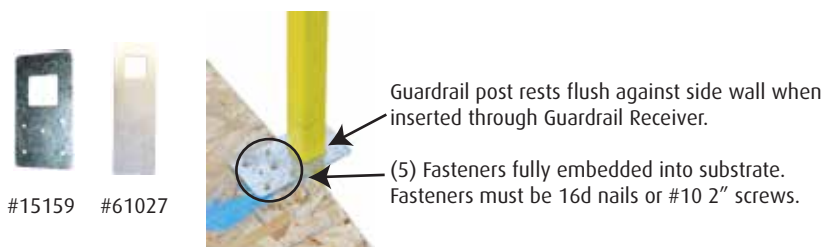
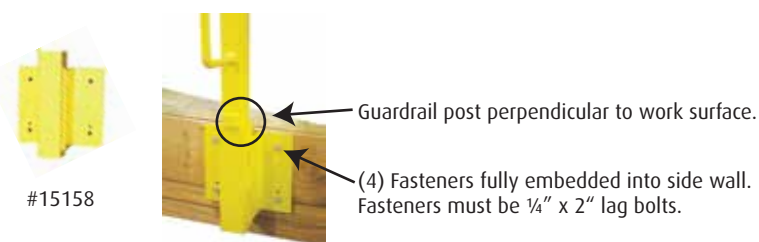
1. Selected work area must be free of all hazards, including, but not limited to, debris, rot, decay, cracking, and hazardous materials. **NEVER** install Guardrail Receivers on top of gravel or other loose or slippery surfaces.
2. Guardrail Receivers may be spaced a **MAXIMUM** of 8' apart. Guardrail systems must be installed a **MINIMUM** 10' from power lines and all other electrical hazards.
3. All guardrail posts, guardrails, and all other equipment must be selected and deemed compatible by a Competent Person. All guardrails **MUST** be compatible 2" x 4" or 2" x 6" construction grade lumber, or compatible snap-on metal rails.
4. Toprails must be 42" (+/- 3") above the work surface or, if used in stilt work applications, 42" plus height of stilts.
5. Midrails must be halfway between the top edge of the guardrail system and the working level (not the toeboard).
6. All intermediary rails (not the toprail or the midrail) must not allow for gaps greater than 19".
7. Toeboards are **REQUIRED** on surfaces with slopes more than 4/12 (vertical/horizontal).
8. Toeboards are **REQUIRED** if a risk exists for tools, equipment, materials, or other substances to fall down to a lower level.
9. Toeboards must be a minimum 3½" from their top edge to the work surface, and must not have greater than ¼" clearance between their bottom edge and the work surface.
10. Lay out the job by measuring and spacing the location of Guardrail Receivers on the work surface. Failure to properly measure and plan ahead may result in having to move and reinstall system components.

For all Guardrail Receivers, fasteners MUST be completely embedded in substrate, and MUST be those provided by Guardian Fall Protection, or be deemed compatible with applicable Guardrail Receiver by a Competent Person.

Guardrail Receivers MUST be installed flush against substrate, and must allow guardrail posts to be positioned perpendicular to work surface.

Substrate MUST be deemed compatible with Guardrail Receivers by a Competent Person.

See the following for model-specific instruction examples and requirements:





#61029



2" x 4" board perpendicular to work surface.

(4) Fasteners fully embedded into side wall. Fasteners must be 1/4" x 2" lag bolts.



#61140



Guardrail posts and rails installed in a manner compliant with requirements specified by this manual.



(4) Fasteners fully embedded substrate. Fasteners must be 1/4" x 2" lag bolts.



#61141



(2) 2" x 4" boards inserted vertically in each Guardrail Receiver, and secured on each side with compatible fastener.

(4) Fasteners fully embedded substrate. Fasteners must be 1/4" x 2" lag bolts.

Toeboard installed in applicable location of Guardrail Receiver. Use compatible fastener to hold in place.

Inspection Log

User must inspect prior to EACH use. Competent Person other than user must complete formal inspection at least every 6 months. Competent Person to inspect and initial.

Date of First Use: _____. Product lifetime is indefinite, as long as it passes pre-use and Competent Person inspections.

This inspection log must be specific to one Guardrail Receivers. Separate inspection logs must be used for each Guardrail Receivers. All inspection records must be made visible and available to all users at all times.

	J	F	M	A	M	J	J	A	S	O	N	D
YR												
YR												
YR												
YR												
YR												

If equipment fails inspection IMMEDIATELY REMOVE FROM SERVICE.

Notes